



Registered Homes: Flat 2, Lower Clapton Road

This flat offers a specialist service for up to three women, it is purpose built with 1:1 support, wheelchair access and a sensory room and garden.

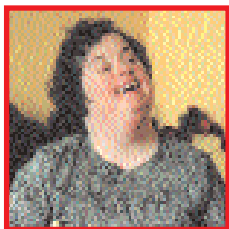




Registered Homes: Flat 2, Lower Clapton Road

Flat 2 is a very specialised service, providing 1:1 support to women who have very complex needs, including significantly challenging behaviour. The service caters for a maximum of three people.

The flat is spacious and wheelchair accessible. It is purpose built and forms part over a larger block of flats in Clapton. It's on a busy road, but set back, with its own parking. A bus stops immediately outside and shops are easily accessible. There are large individual bedrooms, a sensory room, bathroom, kitchen and living room. There's a large sensory garden and a conservatory.



Support is offered by a team of female staff led by a manager. The ethos of the project is to sustain activities during the day that people either need to or want to

do, and offering these in a very routine way so that they are predictable to the service users, who are then more able to participate in them. Activities are both in the house and outside in the local community and the service users have built up networks of friend and acquaintances as a result of being able to take part in activities.

The work is monitored very closely and technology is used to minimise the time that staff have to spend on paperwork and increase the time that they can spend with the service users. Technology also enables us to measure how well the service is doing in providing the opportunities that the people want by measuring incidents of challenging behaviour; measuring how often people take up activities, so that we can change the ones that people don't want to do and replace them with things that people are more interested in.

The project has proven success in reducing challenging behaviour and assisting people in increasing their participation in activities from the routine (housework) to social activities, potential employment activities.

Scale of Charges £

How do I find out more about the service?

Contact a Service Manager on 020 8985 5511 x225 or 226 or email info@hilt.org.uk

Hackney Independent Living Team, Richmond House, 1a Westgate Street, London E8 3RL.

Tel: 020 8985 5511 **Fax:** 020 8533 2029 **E-mail:** info@hilt.org.uk **Web:** www.hilt.org.uk

Registered with the Registry of Friendly Societies No. 25852R

